

ITU INITIATIVES

Concept presentation by

Mr Mike Nxele

Human Capacity Building Officer

HCB/PKM/BDT

mike.nxele@itu.int

Botswana ,

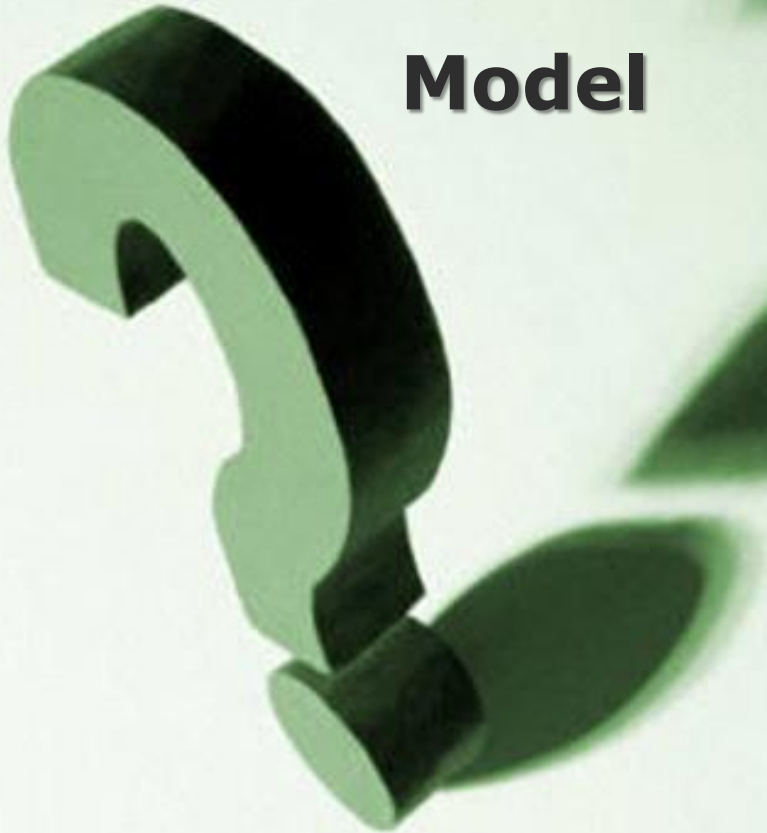
May 2013

Committed to connecting the world



ITU INITIATIVES

**Smart Sustainable
Development
Model**



**m-Powering
Development**



ITU INITIATIVES

This two initiatives are leveraging on the existing work of the ITU within programmes and regional initiatives



M-POWERING DEVELOPMENT



M-POWERING DEVELOPMENT

"I believe that mobile technologies and broadband infrastructure is critical in laying the foundation of a knowledge society... I also recognize that infrastructure alone is not enough to lead us to sustainable development. We therefore need the right policies, regulations and legal framework that will open doors to new ICT applications and services..."



"The m-Powering Development Platform will be the glue that holds everything together."

Mr Brahima Sanou,
Director of BDT, ITU



M-POWERING DEVELOPMENT: BENEFITS



Committed to connecting the world

M-POWERING DEVELOPMENT: WHY?

- ❑ Helps to extend the benefits of mobile telephony to all individuals in order to build an inclusive information society with special focus on rural areas;
- ❑ Stimulates GDP growth and creates employment opportunities;
- ❑ Provides advantages of wireless technologies at affordable rates;
- ❑ Has a clear-cut agenda and provides a flexible framework for action.

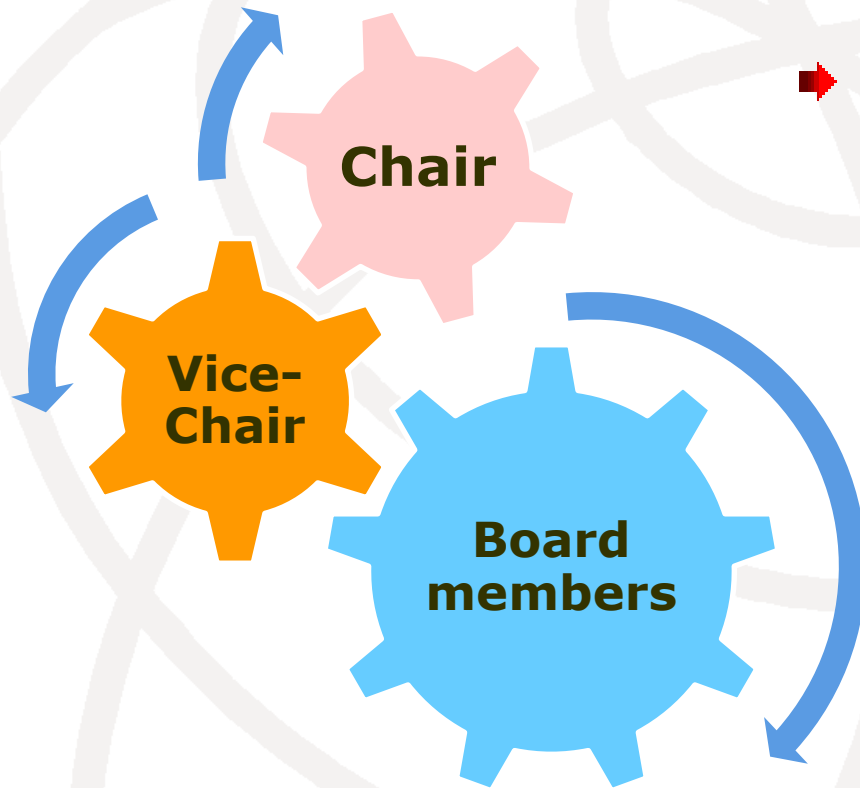


Committed to connecting the world

M-POWERING DEVELOPMENT: OBJECTIVES

- ❑ Harness mobile networks in fields that foster sustainable development;
- ❑ Increase the use of mobile services and applications to improve economic activity, particularly in rural and remote areas;
- ❑ Foster mobile services in not economically profitable areas for operators today;
- ❑ Create synergies in similar existing initiatives;
- ❑ Optimize the use of scarce resources;
- ❑ Forge public-private partnerships and promote large scale multi-stakeholder projects wherever possible.

M-POWERING DEVELOPMENT GOVERNANCE: ADVISORY BOARD



- Board members – maximum 2 terms of 2 years
- Vice-Chairman-the BDT Director of the ITU to ensure continuity
- Secretariat – the BDT

M-POWERING DEVELOPMENT: WHAT CAN WE DO?

Human Capacity Building (HCB) division (PKM/BDT/ITU) will contribute to the development of m-Education and m-Learning by:

- ❑ **Overcoming users' readiness** through its ITU Academy and different training programmes;
- ❑ **Supporting multi-stakeholder approach** through its activities and combining socially-good and commercially-oriented mind-set;
- ❑ **Supporting from the top** – HCB proposes to organize a forum-dialogue for high level officials from ICT, Education sectors and mobile operators.

SMART SUSTAINABLE DEVELOPMENT MODEL



SMART SUSTAINABLE DEVELOPMENT MODEL

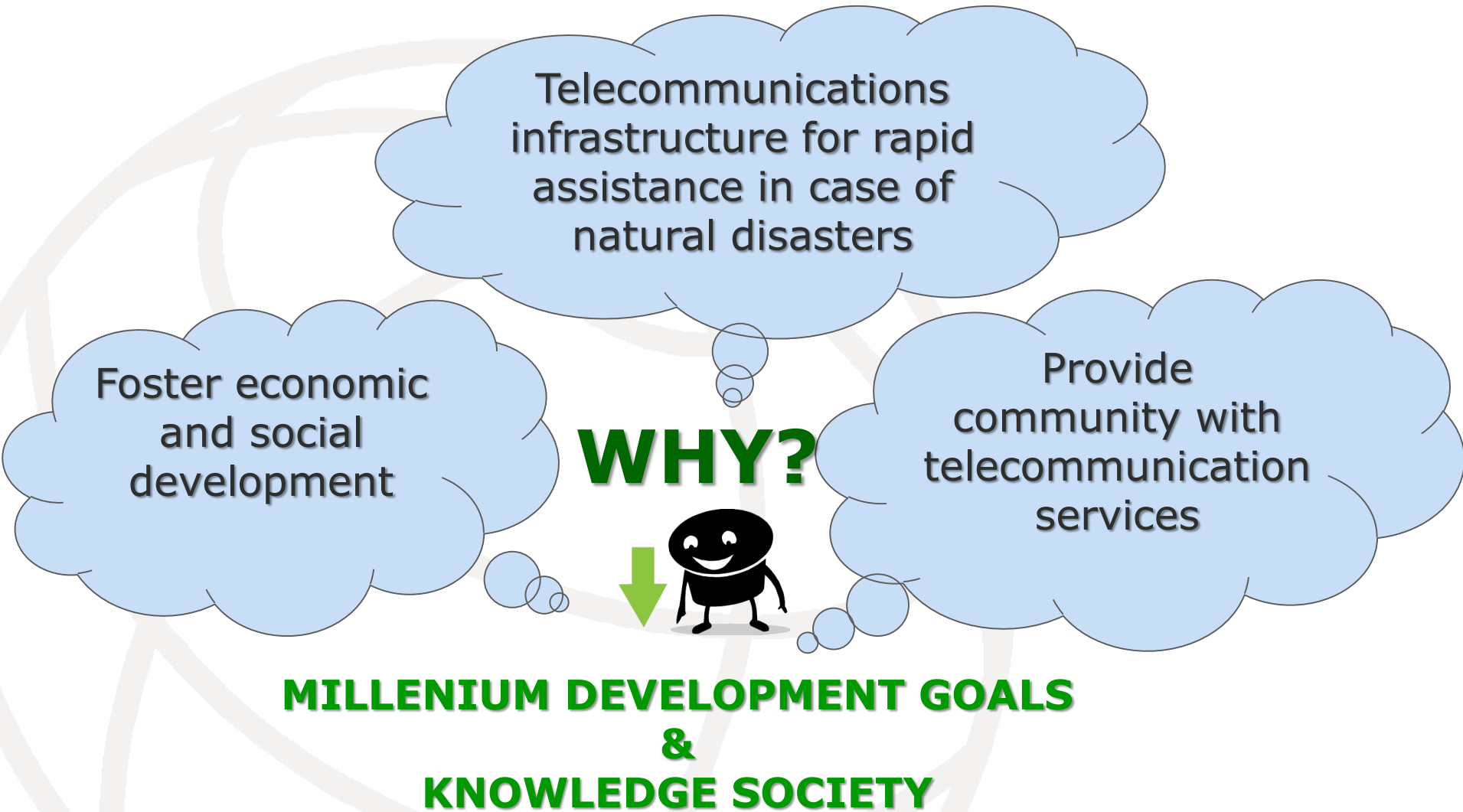


"We must optimize, rationalize and maximize the use of telecommunication resources by linking disaster mitigation and rescue resources with sustainable development".

Mr Brahim Sanou,
Director of BDT, ITU



SMART SUSTAINABLE DEVELOPMENT MODEL



Committed to connecting the world

SMART SUSTAINABLE DEVELOPMENT MODEL OBJECTIVES

- ❑ Harness the potential of ICTs by saving lives at times of emergencies;
- ❑ Link rural telecommunications/ ICT development to both disaster risk reduction and management efforts;
- ❑ Make optimal use of scarce and high cost resources by putting in use unused satellite capacity;
- ❑ Create ecosystems: investments \longleftrightarrow response for public safety;
- ❑ Ensure deployment of robust and resilient communication networks;
- ❑ Avoid duplication in efforts, which will reduce costs for infrastructure investment.

SMART SUSTAINABLE DEVELOPMENT MODEL: PILLARS

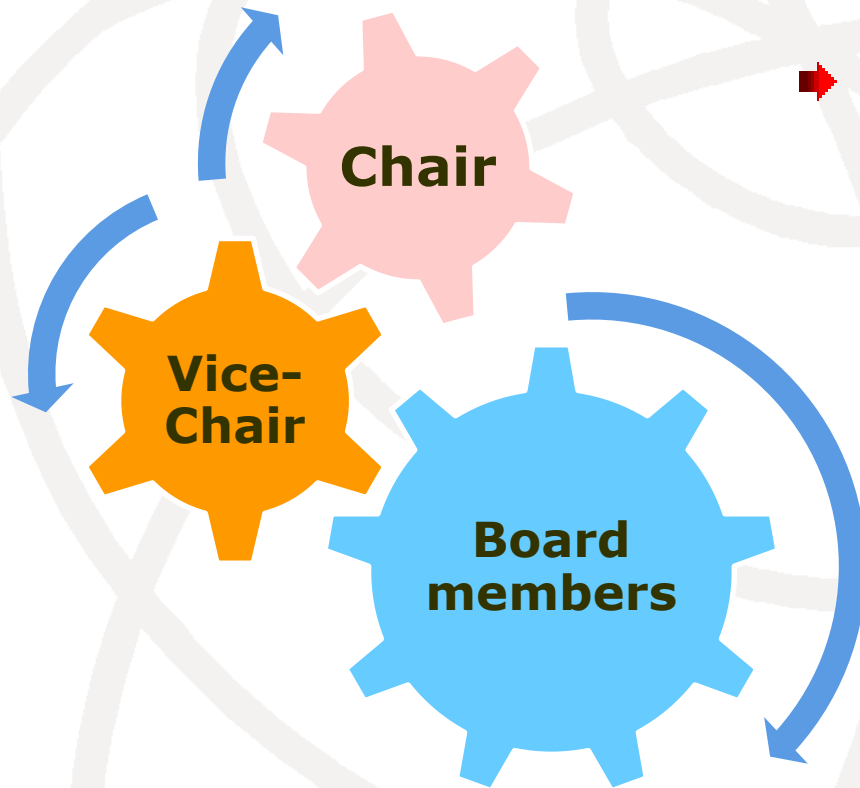
**ICT for
Emergency**

**ICT for
Development**

**ICT for
Capacity
Building**

Committed to connecting the world

SMART SUSTAINABLE DEVELOPMENT MODEL: ADVISORY BOARD



- Board members – maximum 2 terms of 2 years
- Vice-Chairman-the BDT Director of the ITU to ensure continuity
- Secretariat – the BDT

Committed to connecting the world

SMART SUSTAINABLE DEVELOPMENT MODEL

WHAT CAN WE DO?

Human Capacity Building division within PKM/BDT/ITU will build human and institutional capacity in order to e-skill countries and their citizens and overcome e-readiness through:

- ☐ Development of the training materials;
- ☐ Delivery of the training materials;
- ☐ Establishing a dialog between stakeholders.



WHY JOINING? BE PART OF THE SOLUTION:

Address solutions to common problems through crowdsourcing and partnerships

Leverage your ideas by making use of expertise of ITU and others

Get your voice heard to shape the future by collaborating with a wide range of stakeholders

Committed to connecting the world



THANK YOU!

mike.nxele@itu.int

Committed to connecting the world

